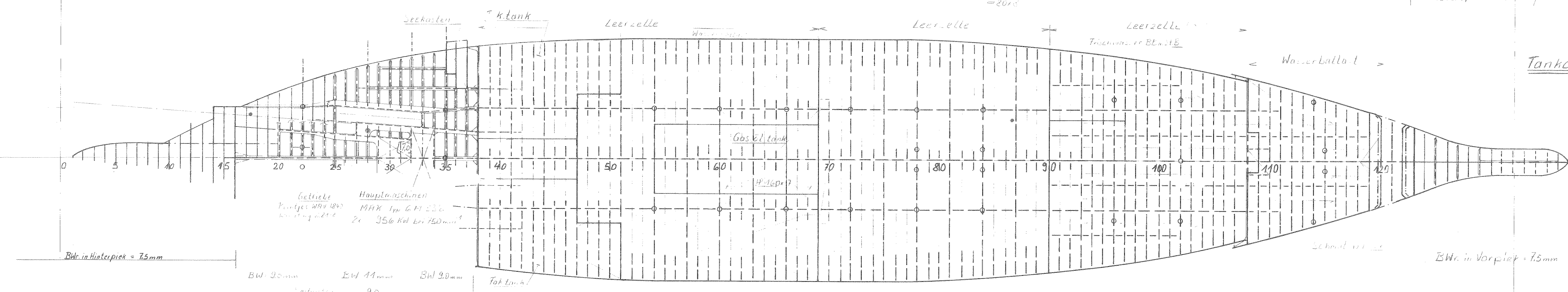
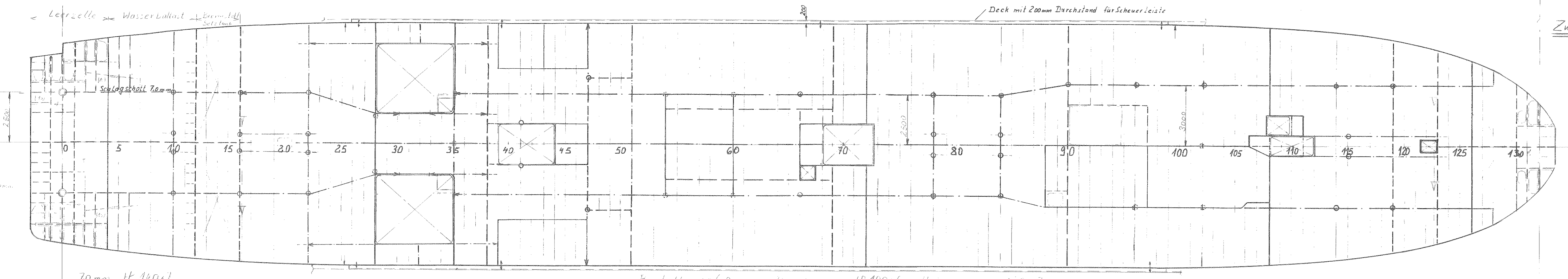
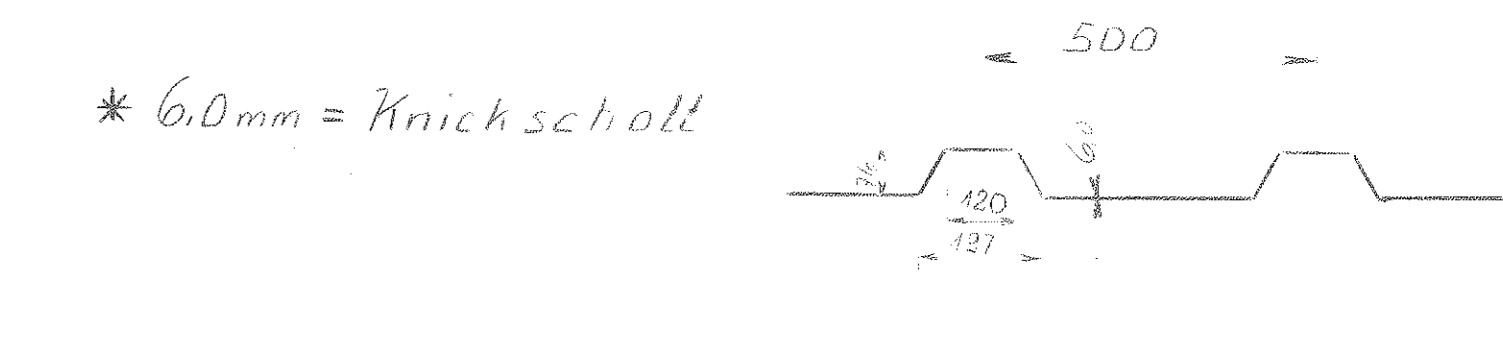
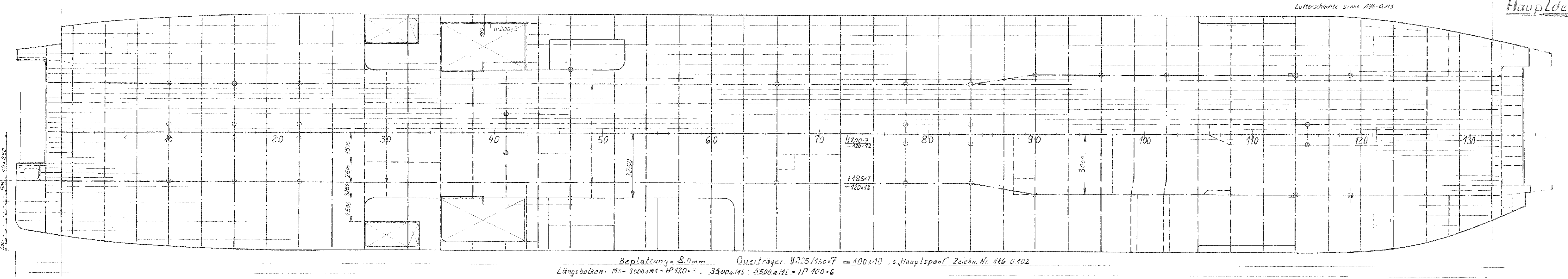
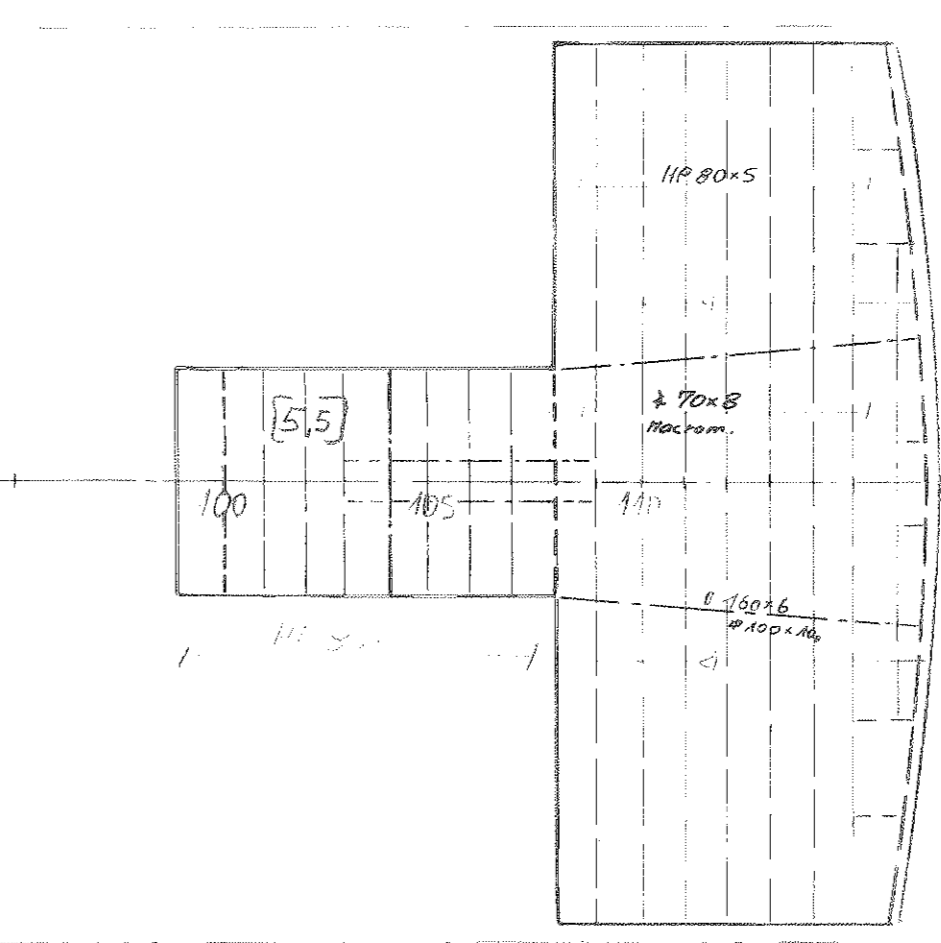
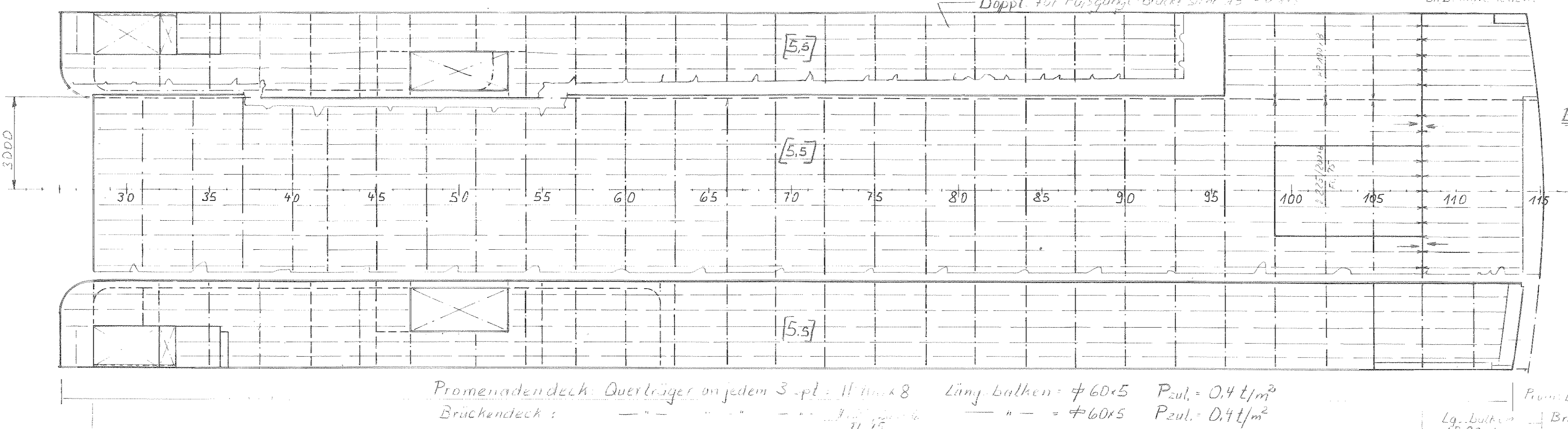


Über-schnitte unter Zw. deck
 " " oberh.
 Zeichn. Nr. 0.409, 0.410, 0.411, 0.412, 0.413, 0.414, 0.415, 0.416, 0.417, 0.418, 0.419, 0.420, 0.421, 0.422, 0.423, 0.424, 0.425, 0.426, 0.427, 0.428, 0.429, 0.430, 0.431, 0.432, 0.433, 0.434, 0.435, 0.436, 0.437, 0.438, 0.439, 0.440, 0.441, 0.442, 0.443, 0.444, 0.445, 0.446, 0.447, 0.448, 0.449, 0.450, 0.451, 0.452, 0.453, 0.454, 0.455, 0.456, 0.457, 0.458, 0.459, 0.460, 0.461, 0.462, 0.463, 0.464, 0.465, 0.466, 0.467, 0.468, 0.469, 0.470, 0.471, 0.472, 0.473, 0.474, 0.475, 0.476, 0.477, 0.478, 0.479, 0.480, 0.481, 0.482, 0.483, 0.484, 0.485, 0.486, 0.487, 0.488, 0.489, 0.490, 0.491, 0.492, 0.493, 0.494, 0.495, 0.496, 0.497, 0.498, 0.499, 0.500, 0.501, 0.502, 0.503, 0.504, 0.505, 0.506, 0.507, 0.508, 0.509, 0.510, 0.511, 0.512, 0.513, 0.514, 0.515, 0.516, 0.517, 0.518, 0.519, 0.520, 0.521, 0.522, 0.523, 0.524, 0.525, 0.526, 0.527, 0.528, 0.529, 0.530, 0.531, 0.532, 0.533, 0.534, 0.535, 0.536, 0.537, 0.538, 0.539, 0.540, 0.541, 0.542, 0.543, 0.544, 0.545, 0.546, 0.547, 0.548, 0.549, 0.550, 0.551, 0.552, 0.553, 0.554, 0.555, 0.556, 0.557, 0.558, 0.559, 0.560, 0.561, 0.562, 0.563, 0.564, 0.565, 0.566, 0.567, 0.568, 0.569, 0.570, 0.571, 0.572, 0.573, 0.574, 0.575, 0.576, 0.577, 0.578, 0.579, 0.580, 0.581, 0.582, 0.583, 0.584, 0.585, 0.586, 0.587, 0.588, 0.589, 0.590, 0.591, 0.592, 0.593, 0.594, 0.595, 0.596, 0.597, 0.598, 0.599, 0.600, 0.601, 0.602, 0.603, 0.604, 0.605, 0.606, 0.607, 0.608, 0.609, 0.610, 0.611, 0.612, 0.613, 0.614, 0.615, 0.616, 0.617, 0.618, 0.619, 0.620, 0.621, 0.622, 0.623, 0.624, 0.625, 0.626, 0.627, 0.628, 0.629, 0.630, 0.631, 0.632, 0.633, 0.634, 0.635, 0.636, 0.637, 0.638, 0.639, 0.640, 0.641, 0.642, 0.643, 0.644, 0.645, 0.646, 0.647, 0.648, 0.649, 0.650, 0.651, 0.652, 0.653, 0.654, 0.655, 0.656, 0.657, 0.658, 0.659, 0.660, 0.661, 0.662, 0.663, 0.664, 0.665, 0.666, 0.667, 0.668, 0.669, 0.670, 0.671, 0.672, 0.673, 0.674, 0.675, 0.676, 0.677, 0.678, 0.679, 0.680, 0.681, 0.682, 0.683, 0.684, 0.685, 0.686, 0.687, 0.688, 0.689, 0.690, 0.691, 0.692, 0.693, 0.694, 0.695, 0.696, 0.697, 0.698, 0.699, 0.700, 0.701, 0.702, 0.703, 0.704, 0.705, 0.706, 0.707, 0.708, 0.709, 0.710, 0.711, 0.712, 0.713, 0.714, 0.715, 0.716, 0.717, 0.718, 0.719, 0.720, 0.721, 0.722, 0.723, 0.724, 0.725, 0.726, 0.727, 0.728, 0.729, 0.730, 0.731, 0.732, 0.733, 0.734, 0.735, 0.736, 0.737, 0.738, 0.739, 0.740, 0.741, 0.742, 0.743, 0.744, 0.745, 0.746, 0.747, 0.748, 0.749, 0.750, 0.751, 0.752, 0.753, 0.754, 0.755, 0.756, 0.757, 0.758, 0.759, 0.760, 0.761, 0.762, 0.763, 0.764, 0.765, 0.766, 0.767, 0.768, 0.769, 0.770, 0.771, 0.772, 0.773, 0.774, 0.775, 0.776, 0.777, 0.778, 0.779, 0.780, 0.781, 0.782, 0.783, 0.784, 0.785, 0.786, 0.787, 0.788, 0.789, 0.790, 0.791, 0.792, 0.793, 0.794, 0.795, 0.796, 0.797, 0.798, 0.799, 0.800, 0.801, 0.802, 0.803, 0.804, 0.805, 0.806, 0.807, 0.808, 0.809, 0.810, 0.811, 0.812, 0.813, 0.814, 0.815, 0.816, 0.817, 0.818, 0.819, 0.820, 0.821, 0.822, 0.823, 0.824, 0.825, 0.826, 0.827, 0.828, 0.829, 0.830, 0.831, 0.832, 0.833, 0.834, 0.835, 0.836, 0.837, 0.838, 0.839, 0.840, 0.841, 0.842, 0.843, 0.844, 0.845, 0.846, 0.847, 0.848, 0.849, 0.850, 0.851, 0.852, 0.853, 0.854, 0.855, 0.856, 0.857, 0.858, 0.859, 0.860, 0.861, 0.862, 0.863, 0.864, 0.865, 0.866, 0.867, 0.868, 0.869, 0.870, 0.871, 0.872, 0.873, 0.874, 0.875, 0.876, 0.877, 0.878, 0.879, 0.880, 0.881, 0.882, 0.883, 0.884, 0.885, 0.886, 0.887, 0.888, 0.889, 0.890, 0.891, 0.892, 0.893, 0.894, 0.895, 0.896, 0.897, 0.898, 0.899, 0.900, 0.901, 0.902, 0.903, 0.904, 0.905, 0.906, 0.907, 0.908, 0.909, 0.910, 0.911, 0.912, 0.913, 0.914, 0.915, 0.916, 0.917, 0.918, 0.919, 0.920, 0.921, 0.922, 0.923, 0.924, 0.925, 0.926, 0.927, 0.928, 0.929, 0.930, 0.931, 0.932, 0.933, 0.934, 0.935, 0.936, 0.937, 0.938, 0.939, 0.940, 0.941, 0.942, 0.943, 0.944, 0.945, 0.946, 0.947, 0.948, 0.949, 0.950, 0.951, 0.952, 0.953, 0.954, 0.955, 0.956, 0.957, 0.958, 0.959, 0.960, 0.961, 0.962, 0.963, 0.964, 0.965, 0.966, 0.967, 0.968, 0.969, 0.970, 0.971, 0.972, 0.973, 0.974, 0.975, 0.976, 0.977, 0.978, 0.979, 0.980, 0.981, 0.982, 0.983, 0.984, 0.985, 0.986, 0.987, 0.988, 0.989, 0.990, 0.991, 0.992, 0.993, 0.994, 0.995, 0.996, 0.997, 0.998, 0.999, 1.000



Klasse GL 100 A4 X 1 (100) E + MC E AUT
 "Fahrschiff"
 Hauptabmessungen
 Länge über alles ca. 78.70 m
 -- zwischen Loten 72.65 m
 Breite auf Spanten 12.00 m
 Seitenhöhe Hauptdeck 6.10 m
 Konstr. Tiefgang 2.50 m
 Spantenabstand 0.55 m
 Kielhöhe 0.50 m
 Aufbaumenge 0.40 m
 Flachkielbreite 1.40 m
 Beschränkungstiefe ca. 1.6 m
 Hauptmaschine 2 x 356 kW

Ostfriesland
 IMO No. 8324622

Genehmigungen / APPROVALS		Datum		Name		Art der Änderung	
1. 2. 3. 4. 5. 6. 7. 8. 9. 10. 11. 12. 13. 14. 15. 16. 17. 18. 19. 20. 21. 22. 23. 24. 25. 26. 27. 28. 29. 30. 31. 32. 33. 34. 35. 36. 37. 38. 39. 40. 41. 42. 43. 44. 45. 46. 47. 48. 49. 50. 51. 52. 53. 54. 55. 56. 57. 58. 59. 60. 61. 62. 63. 64. 65. 66. 67. 68. 69. 70. 71. 72. 73. 74. 75. 76. 77. 78. 79. 80. 81. 82. 83. 84. 85. 86. 87. 88. 89. 90. 91. 92. 93. 94. 95. 96. 97. 98. 99. 100.							

Schiffswert Martin Jansen
 295 LEER, Ostfriesland
 Zeichn. Nr. NB 186
 186-0101
 Stahlplan